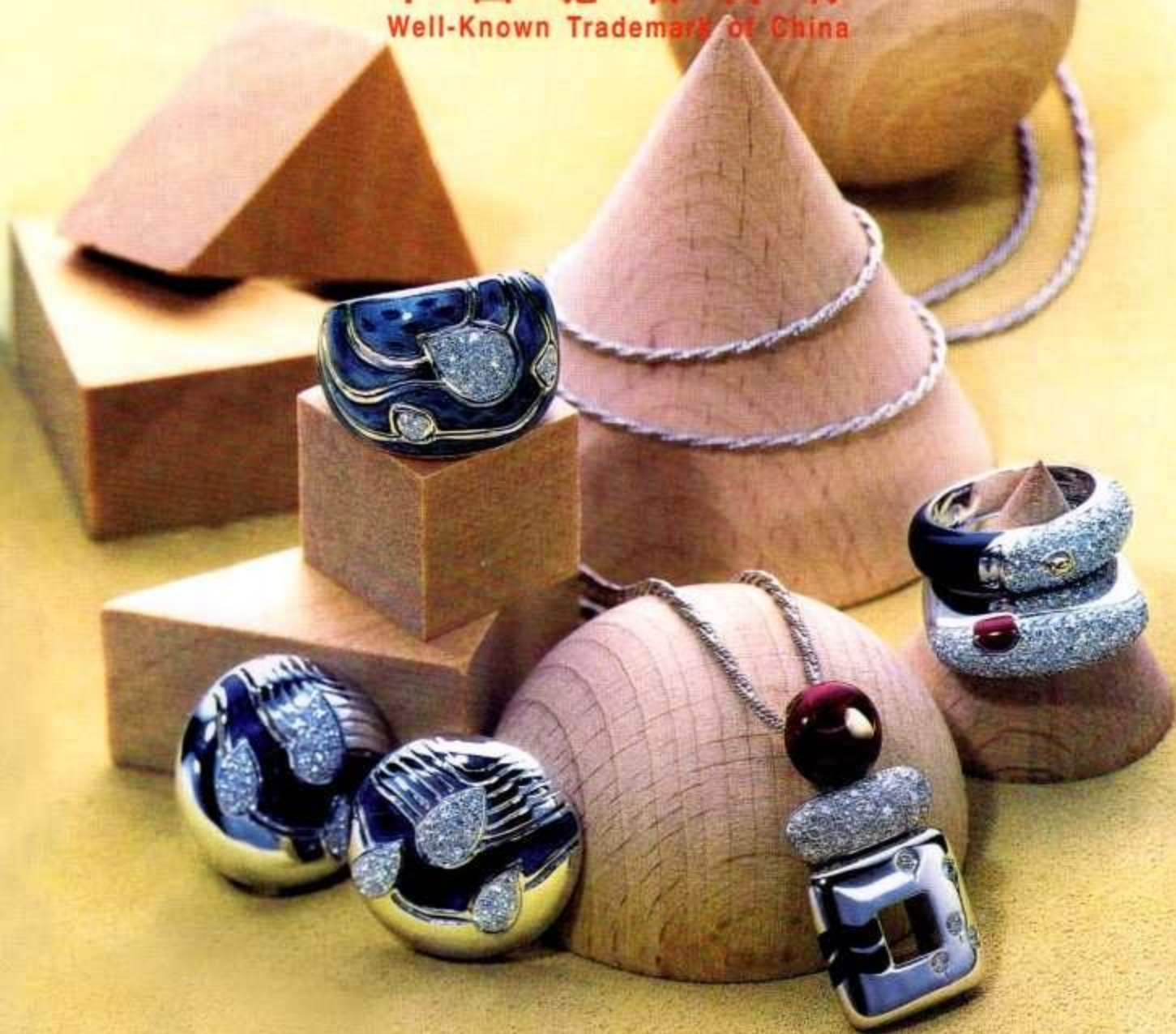


JINDELI

金得利 | 珠宝世界

JINDELI GEM & JEWELLERY WORLD

中国驰名商标
Well-Known Trademark of China



中国·金得利集团

JINDELI HOLDINGS LIMITED, CHINA





Y214
12.5g



Y215
12.5g



Y216
12.5g



Y217
12.5g



Y218
12.5g



Y219
12.5g



Y220
12.5g



Y221
12.5g



Y222
12.5g



Y223
12.5g



Y211
7.2g



Y213
7.5g



Y212
6.9g



Y224
12.5g



Y225
12.5g



Y228
5g



Y229
6.1g



Y230
5.2g



Y231
5.8g



Y521 33Frs
Actual 8.1g
Imaginary 10.9g



T1
1.1g



T2
2g



T3
5g



T4
5.2g



Y232
7.2g



Y233
10g



Y235
8.1g



Y234
11.6g



Y244
1.9g



Y245
2.3g



Y246
3.1g



Y247
3.8g



Y32
9.4g



Y33
9.7g



Y248
5.8g



Y249
9.4g



Y30
7.5g



Y31
8.1g



Y34
20.3g



Y35
20.3g



Y36
20.3g



Y37
20.3g



Y38
20.3g



Y39
20.3g



Y310
20.3g



Y311
20.3g



Y312
20.3g



Y313
20.3g



Y314
20.3g



Y315
20.3g



Y316
10g



Y317
12.8g



Y318
12.5g



Y319
11.3g



Y713
25.6g



Y715
13.8g



Y714
11.9g



Y716
26.9g



Y717
13.8g



Y40
3.1g



Y41
3.4g



Y42
3.1g



Y43
3g



Y44
2.8g



Y45
3.1g



Y46
3g



Y47
2.7g



Y48
3g



Y49
3.3g



Y410
2.8g



Y411
2.7g



Y413
5.9g



Y414
12.5g



Y412
0.9g



Y416
6.9g



Y415
3.1g



Y417
8.4g



Y418
6.9g



Y419
5.8g



Y420
9.1g



Y421
7.8g



Y422
9.1g



Y423
8.4g



Y424
2.8g



Y425
3.3g



Y426
3.4g



Y427
3g



Y428
3g



Y429
3g



Y430
3g



Y431
3.1g



Y432
3.3g



Y433
3g



Y434
3g



Y435
2.8g



Y436
3.1g



Y437
3.1g



Y438
3g



Y439
4.5g



Y440
4.7g



Y441
4.7g



Y442
3.6g



Y443
4.5g



Y444
4.4g



Y445
3.9g



Y446
4.2g



Y447
3.8g



Y448
4.5g



Y449
4.2g



Y450
4.7g



Y451
2.3g



Y452
2g



Y453
Actual 2.3g
Imaginary 2.8g



Y454
1.6g



Y455
2.5g



Y456
2.2g



Y457
2.3g



Y458
2.3g



Y459
2.3g



Y460
2.7g



Y461
2.3g



Y462
2.3g



Y463
3.1g



Y464
1.4g



Y465
Actual 3.8g
Imaginary 4.4g



Y466
4.5g



Y468
13.8g



Y469
3.8g 8x8
O2.5



Y470 O1.8
Actual 7.8g
Imaginary 8.4g



Y467
Actual 8.4g
Imaginary 9.1g



Y480
Actual 5.9g
Imaginary 7.2g



7471
Actual 12.5g
Imaginary 13.8g



Y472
4.7g

注: (Flrs=Flowers)



Y478
Actual 5g
Imaginary 5.9g



Y479
Actual 4.5g
Imaginary 5.3g



Y486
Actual 6.1g
Imaginary 7.5g



Y481
1.7g



Y482
Actual 4.8g
Imaginary 5.9g



Y483
5g



Y484
3g



Y485
Actual 7.8g
Imaginary 10g



Y50 12Flrs
Actual 3.8g
Imaginary 5g



Y51 12Flrs
Actual 16.3g
Imaginary 17.8g



Y52 6Flrs
Actual 14.1g
Imaginary 15.6g



Y53 15Flrs
Actual 5g
Imaginary 7.2g



Y54 15Flrs
Actual 3.8g
Imaginary 5.6g



Y55 15Flrs
Actual 5.3g
Imaginary 7.5g



Y56 15Flrs
Actual 7.2g
Imaginary 9.7g



Y57 15Flrs
Actual 6.9g
Imaginary 8.8g



Y58 15Flrs
Actual 5.3g
Imaginary 7.5g



Y59 15Flrs
Actual 7.6g
Imaginary 10.3g



Y510 16Flrs
Actual 12.8g
Imaginary 15g



Y511 12Flrs
Actual 17.8g
Imaginary 20.3g



Y512 10Flrs
Actual 4.7g
Imaginary 6.8g



Y513 10Flrs
Actual 7.2g
Imaginary 9.4g



Y514 12Flrs
Actual 6.6g
Imaginary 9.4g



Y515 12Flrs
Actual 11.9g
Imaginary 14.4g



Y516 8Flrs
Actual 7.2g
Imaginary 9.4g



Y517 8Flrs
Actual 6.3g
Imaginary 8.4g



Y518 6Flrs
Actual 10g
Imaginary 11.3g



Y519 12Flrs
Actual 12.5g
Imaginary 15g



Y520 6Flrs
Actual 13.1g
Imaginary 15.6g



Y522 8Flrs
Actual 10g
Imaginary 12.5g

Y523 8.4g .45cm 45Flowers one mould

Y524 9.4g .45cm 50Flowers one mould

Y525 7.8g .45cm 40Flowers one mould

Y526 14.7g .45cm 35Flowers one mould

Y527 Actual Weight 11.3g 17cm 16Flowers one mould (Imaginary Weight 13.8g)

Y528 9.4g 17cm 20Flowers one mould

Y529 10.9g 17cm 18Flowers one mould

Y530 8.1g 17cm 16Flowers one mould

Y531 10.3g 17cm 18Flowers one mould

Y532 10.9g 17cm 17Flowers one mould

Y533 11.6g 17cm 16Flowers one mould

Y534 12.5g 17cm 10Flowers one mould

Y535 Actual Weight 7.2g 17cm 17Flowers one mould (Imaginary Weight 9.7g)

Y536 11.9g 17cm 16Flowers one mould

Y537 Actual Weight 9.4g 17cm 15Flowers one mould (Imaginary Weight 12.8g)

Y538 Actual Weight 10g 17cm 14Flowers one mould (Imaginary Weight 13.4g)

Y539 Actual Weight 13.8g 17cm 12Flowers one mould (Imaginary Weight 16.6g)



Y540 Actual Weight 6.6g 17cm 8Flowers one mould (Imaginary Weight 8.8g)



Y541 Actual Weight 8.4g 17cm 8Flowers one mould (Imaginary Weight 10.6g)



Y542 Actual Weight 17.2g 17cm 22Flowers two mould (Imaginary Weight 21.2g)



Y543 Actual Weight 20.3g 17cm 22Flowers two mould (Imaginary Weight 24.4g)



Y544 20.3g 17cm 17Flowers one mould



Y545 Actual Weight 26.9g 45cm 180Flowers four mould (Imaginary Weight 31.3g)



Y546 Actual Weight 48.4g 45cm 100Flowers three mould (Imaginary Weight 52.5g)



Y547 Actual Weight 79.7g 45cm 64Flowers three mould (Imaginary Weight 86g)



Y548 Actual Weight 10.3g 17cm 17Flowers one mould (Imaginary Weight 14.1g)



Y549 11.9g 17cm 20Flowers one mould



Y550 10.9g 17cm 16Flowers one mould



Y551 17.5g 17cm 20Flowers one mould



Y552 Actual Weight 12.2g 17cm 15Flowers one mould (Imaginary Weight 15.3g)



Y553 12.5g 17cm 14Flowers one mould



Y554 22.8g 17cm 18Flowers one mould



Y555 Actual Weight 13.1g 17cm 13Flowers one mould (Imaginary Weight 15.9g)



Y556 Actual Weight 16.6g 17cm 12Flowers one mould (Imaginary Weight 19.1g)



Y557 24.1g 17cm 10Flowers one mould



Y558 32.8g 17cm 9Flowers one mould



Y559 Actual Weight 15.9g 17cm 10Flowers one mould (Imaginary Weight 18.4g)



Y560 Actual Weight 45.3g 17cm 16Flowers two mould (Imaginary Weight 47.8g)



Y561 Actual Weight 12.2g 17cm 104Flowers one per A.B mould (Imaginary Weight 15.6g)



Y562 Actual Weight 27.5g 17cm 95Flowers one per A.B.C mould (Imaginary Weight 31.3g)



Y568 Actual Weight 7.2g 17cm 8Flowers one mould(Imaginary Weight 8.4g)



Y582 Actual Weight 8.9g 17cm 15Flowers one mould (Imaginary Weight 9.1g)



Y583 Actual Weight 10.9g 17cm 15Flowers one mould (Imaginary Weight 12.8g)



Y584 Actual Weight 10.3g 17cm 12Flowers one mould (Imaginary Weight 12.2g)



Y585 Actual Weight 12.8g 17cm 10Flowers one mould (Imaginary Weight 15g)



Y586 Actual Weight 5.8g 17cm 12Flowers one mould (Imaginary Weight 6.9g)



Y587 Actual Weight 5.3g 17cm 10Flowers one mould (Imaginary Weight 6.6g)



Y588 Actual Weight 6.6g 17cm 8Flowers one mould (Imaginary Weight 7.8g)



Y589 Actual Weight 11.9g 17cm 8Flowers one mould (Imaginary Weight 13.8g)



Y590 10Flrs
Actual 5.6g
Imaginary 6.9g



Y591 10Flrs
Actual 3.4g
Imaginary 4.4g



Y592 10Flrs
Actual 4.5g
Imaginary 5.5g



Y579 9Flrs
Actual 8.8g
Imaginary 10.9g



Y580 6Flrs
Actual 6.1g
Imaginary 7.8g



Y581 6Flrs
Actual 6.3g
Imaginary 8.1g



Y593 10Flrs
Actual 5.8g
Imaginary 6.9g



Y594 6Flrs
Actual 9.1g
Imaginary 10.3g



Y595 8Flrs
Actual 4.5g
Imaginary 6.6g



Y596 4Flrs
Actual 3.9g
Imaginary 5.2g



Y597 4Flrs
Actual 6.6g
Imaginary 7.8g



Y5209 4Flrs
Actual 2.5g
Imaginary 3g



Y5210 4Flrs
Actual 2.5g
Imaginary 3g



Y598 4Flrs
Actual 2.5g
Imaginary 3g



Y599 4Flrs
Actual 2.6g
Imaginary 3g



Y5100 4Flrs
Actual 2.5g
Imaginary 2.8g



Y5101 4Flrs
Actual 2.3g
Imaginary 2.8g



Y5102 4Flrs
Actual 2.7g
Imaginary 3.1g



Y5103 4Flrs
Actual 2.7g
Imaginary 3.1g



Y5104 4Flrs
Actual 2.7g
Imaginary 3.1g



Y5105 4Flrs
Actual 2.3g
Imaginary 2.8g



Y5106 4Flrs
Actual 2.8g
Imaginary 2.8g



Y5107 4Flrs
Actual 2.3g
Imaginary 2.7g



Y5108 4Flrs
Actual 2.5g
Imaginary 3g



Y5109 4Flrs
Actual 2.5g
Imaginary 2.8g



Y5110 4Flrs
Actual 2.5g
Imaginary 3g



Y5111 4Flrs
Actual 2.5g
Imaginary 3g



Y5112 4Flrs
Actual 2.5g
Imaginary 2.8g



Y5113 4Flrs
Actual 2.7g
Imaginary 2.7g



Y5114 4Flrs
Actual 2.3g
Imaginary 2.8g



Y5115 4Flrs
Actual 2.5g
Imaginary 2.8g



Y5116 4Flrs
Actual 2.5g
Imaginary 3g



Y5117 4Flrs
Actual 2.8g
Imaginary 3.3g



Y5118 4Flrs
Actual 2.5g
Imaginary 3g



Y5119 4Flrs
Actual 2.7g
Imaginary 3.1g



Y5120 4Flrs
Actual 2.8g
Imaginary 3.3g



Y5121 4Flrs
Actual 2.2g
Imaginary 2.5g



Y5122 4Flrs
Actual 2.5g
Imaginary 3g



Y5123 4Flrs
Actual 2.3g
Imaginary 2.7g



Y5124 4Flrs
Actual 2.3g
Imaginary 2.7g



Y5125 4Flrs
Actual 2.2g
Imaginary 2.5g



Y5126 4Flrs
Actual 2.7g
Imaginary 3.1g



Y5127 4Flrs
Actual 1.6g
Imaginary 1.9g



Y5128 4Flrs
Actual 1.7g
Imaginary 2.2g



Y5129 4Flrs
Actual 2.3g
Imaginary 2.8g



Y5130 4Flrs
Actual 1.9g
Imaginary 2.3g



Y5131 4Flrs
Actual 3g
Imaginary 3.3g



Y5132 4Flrs
Actual 2.7g
Imaginary 3.1g



Y5133 4Flrs
Actual 2.5g
Imaginary 3g



Y5134 4Flrs
Actual 2.2g
Imaginary 2.6g



Y5135 4Flrs
Actual 2.7g
Imaginary 3g



Y5136 4Flrs
Actual 2.2g
Imaginary 2.7g



Y5137 4Flrs
Actual 2.2g
Imaginary 2.7g



Y5138 4Flrs
Actual 2.5g
Imaginary 2.8g



Y5139 4Flrs
Actual 2.2g
Imaginary 2.7g



Y5140 4Flrs
Actual 2.8g
Imaginary 3.1g



Y5141 4Flrs
Actual 2g
Imaginary 2.5g



Y5142 2Flrs
2.5g



Y5143 2Flrs
2.5g



Y5144 2Flrs
2.5g



Y5145 2Flrs
2.5g



Y5146 2Flrs
2.5g



Y5147 2Flrs
2.5g



Y5148 2Flrs
2.7g



Y5149 2Flrs
2.5g



Y5150 2Flrs
2.7g



Y5151 2Flrs
2.5g



Y5152 2Flrs
2.7g



Y5153 2Flrs
2.5g



Y5154 2Flrs
4.2g



Y5155 2Flrs
4.2g



Y5156 2Flrs
4.4g



Y5157 2Flrs
4.4g



Y5158 2Flrs
4.4g



Y5159 2Flrs
4.2g



Y5160 2Flrs
4.2g



Y5161 2Flrs
4.2g



Y5162 2Flrs
4.4g



Y5163 2Flrs
4.4g



Y5164 2Flrs
4.4g



Y5165 2Flrs
4.5g



Y5166 2Flrs
2.8g



Y5167 2Flrs
2.8g



Y5168 2Flrs
3g



Y5169 2Flrs
2.8g



Y5170 2Flrs
2.8g



Y5171 2Flrs
2.8g



Y5172 2Flrs
2.8g



Y5173 2Flrs
2.8g



Y5174 2Flrs
3g



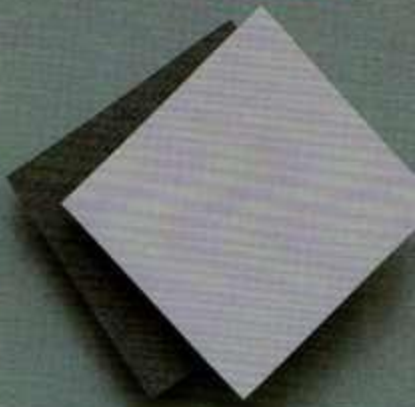
Y5175 2Flrs
2.8g



Y5176 2Flrs
2.8g



Y5177 2Flrs
3g





Y5178 6Flrs
Actual 5.2g
Imaginary 5.9g



Y5179 6Flrs
Actual 4.8g
Imaginary 5.9g



Y5180 6Flrs
Actual 9.1g
Imaginary 10g



Y5181 6Flrs
Actual 5.9g
Imaginary 6.9g



Y5182 6Flrs
Actual 2.6g
Imaginary 3.1g



Y5189 2Flrs
3.4g



Y5183 6Flrs
Actual 4.4g
Imaginary 5.3g



Y5184 6Flrs
Actual 2.3g
Imaginary 3.3g



Y5185 6Flrs
Actual 2.5g
Imaginary 3.6g



Y5186 6Flrs
Actual 2.7g
Imaginary 3.6g



Y5187 6Flrs
Actual 3g
Imaginary 3.9g



Y5188 6Flrs
Actual 3.6g
Imaginary 4.5g



Y5190 Actual Weight 5.6g 17cm 30Flowers one mould (Imaginary Weight 8.1g)



Y5191 Actual Weight 5.9g 17cm 29Flowers one mould (Imaginary Weight 8.4g)



Y5192 Actual Weight 10g 17cm 39Flowers one mould (Imaginary Weight 12.5g)



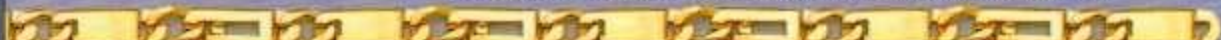
Y5193 Actual Weight 6.9g 17cm 18Flowers one mould (Imaginary Weight 8.8g)



Y5194 Actual Weight 5g 17cm 19Flowers one mould (Imaginary Weight 6.6g)



Y5195 Actual Weight 7.8g 17cm 16Flowers one mould (Imaginary Weight 9.4g)



Y5196 Actual Weight 26.6g 17cm 22Flowers one mould (Imaginary Weight 28.8g)



Y5197 Actual Weight 14.4g 17cm 13Flowers one mould (Imaginary Weight 16.6g)



Y5198 Actual Weight 13.8g 17cm 16Flowers one mould (Imaginary Weight 16.6g)



Y5199 Actual Weight 18.1g 17cm 6Flowers one mould (Imaginary Weight 21.3g)



Y5200 Actual Weight 20.3g 17cm 6Flowers one mould (Imaginary Weight 22.2g)



Y5201 Actual Weight 10g 17cm 15Flowers one mould (Imaginary Weight 13.1g)



Y5202 Actual Weight 10.9g 17cm 12Flowers one mould (Imaginary Weight 13.1g)



Y5203 Actual Weight 7.2g 17cm 12Flowers one mould (Imaginary Weight 10g)



Y5204 Actual Weight 7.8g 17cm 10Flowers one mould (Imaginary Weight 10.3g)



Y5205 6Flrs
Actual 3.8g
Imaginary 5g



Y5206 6Flrs
Actual 3.4g
Imaginary 4.4g



Y5207 8Flrs
Actual 16.6g
Imaginary 18.8g



Y5208 10Flrs
Actual 10g
Imaginary 11.3g



Y5220 40Flrs
Actual 8.4g
Imaginary 10.9g



Y5221 20Flrs
Actual 6.8g
Imaginary 8.1g



Y5222 15Flrs
Actual 6.0g
Imaginary 8.4g



Y5223 12Flrs
Actual 10g
Imaginary 12.2g



Y5224 6Flrs
Actual 13.4g
Imaginary 15g



Y5229 2Flrs
11.9g



Y5228 8Flrs
Actual 6.6g
Imaginary 9.1g



Y5225 Actual Weight 7.5g 17cm 12Flowers one mould (Imaginary Weight 9.1g)



Y5226 Actual Weight 7.8g 17cm 18Flowers one mould (Imaginary Weight 9.4g)



Y5227 Actual Weight 7.2g 17cm 20Flowers one mould (Imaginary Weight 9.4g)



Y64
Actual 13.8g
Imaginary 16.3g



Y60
5g 7x9



Y61 4Flrs
2.7g



Y62
Actual 8.4g
Imaginary 8.1g



Y63
Actual 10.6g
Imaginary 11.6g



Y65
5.3g

Y66
5g



Y67
6.9g



Y68
8.9g



Y69
7.5g



Y610
7.8g



Y611 2Pcs
2.5g



Y612 2Pcs
4.1g



Y613 2Pcs
5.8g



Y614 2Pcs
5.2g



Y615 2Pcs
5.3g



Y616 2Pcs
5.6g



Y617 2Pcs
8.4g



Y618 2Pcs
Actual 8.6g
Imaginary 9.4g



Y619 2Pcs
11.3g



Y620 2Pcs
6.9g



Y621 2Pcs
10.3g



Y622 2Pcs
8.4g



Y623 2Pcs
6.9g



Y624 2Pcs
5.8g



Y625 2Pcs
12.5g



Y70
3.9g



Y626 2Fins
8.4g



Y627 2Fins
10g



Y628 2Fins
7.8g



Y71
8.8g



Y72
6.3g



Y73
10g



Y74
Actual 10.6g
Imaginary 11.6g



Y75
15g



Y76
34.4g



Y77
Actual 16.9g
Imaginary 17.5g



Y78
16.6g



Y79
17.5g



Y710
20.9g



Y711 28.8g - one piece each item(A&B)mould (A 23.4g - Bottom
B 5.2g Jew)



Y712
25.9g



Y718
20.3g



Y720
20.3g



Y721
Actual 8.8g
Imaginary 9.7g



Y722
Actual 19.4g
Imaginary 20.8g



Y723
A. Actual 30.3g Imaginary 31.3g
B. Actual 18.1g Imaginary 20.3g
C. Actual 17.8g Imaginary 20.3g



Y726
Actual 11.9g
Imaginary 14.4g



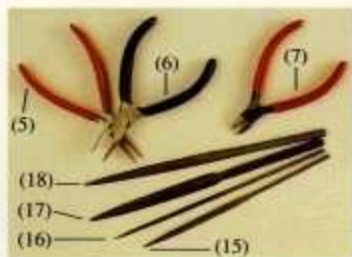
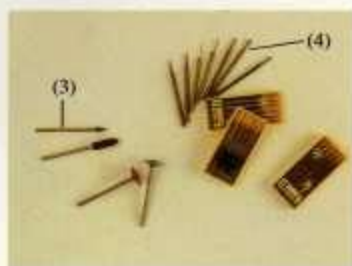
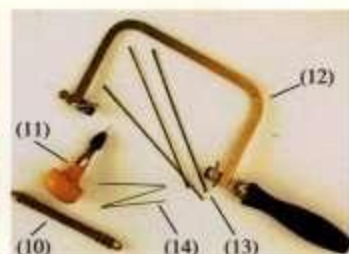
Y725
Actual 35.5g
Imaginary 43.8g



Y719
Actual 11.3g
Imaginary 14.4g



Y727
Actual 39.1g
Imaginary 44.4g



K 金加工常用工具

(1) 砂纸	Polishing paper	(11) 冬菇索	Universal handles with 2 chucks
(2) 吊磨机 (悬鼓式马达)	Power tool	(12) 锯弓	Saw bows
(3) 胶轮	Rubber point	(13) 锯丝	Piercing sawblade
(4) 车针	Steel bur	(14) 警钟针	Steel needle
(5) 圆嘴钳	Round nose plier	(15) 半圆锉	Half round file
(6) 尖嘴钳	Chain nose plier	(16) 三角锉	Three square file
(7) 剪钳	Side and straight cutter	(17) 红柄半圆锉	Red handle halfround file
(8) 抛光马达	Polishing motor	(18) 红柄三角锉	Red handle three square file
(9) 白布轮	Polishing buff		
(10) 双头索	Double end pin vice		

Jewellery Die-casting process & important points to note during process

Besides using high quality brand moulds, the correct use of die-casting techniques is also critical to the quality of processing of precious metal jewellery, especially for large jewellery pieces or those with elaborate details, for which precision is required to achieve the best effects.

I) The operation of die-casting moulds

1. After selecting the desired jewellery design from the sketches manual, weigh an amount of gold or silver about 0.6 gm (for larger pieces this can be slightly more) more than the nominal weight specified in the sketches manual.
2. Check that the flame gun, fuel can and pressure are under normal operations, and that the die-casting cement has been uniformly blended with suitable hardness.
3. Place the gold or silver dose on the upper part of the sprue, use a small flame the heat rapidly the periphery of the mould in several rounds (fig.3) (for extra large moulds it is better to use two flames for heating at the same time, one for the upper portion and one for the lower). Then concentrate the flame at the gold or silver and heat gradually to the required temperature (fig.4 & 5), until the metal completely melts and becomes white hot. During the process boric salt can be added to facilitate melting, if necessary.
4. When the white hot metal is flowing with high fluidity, press the cement down onto the die-cast mould slowly and straightly from right above the mould (fig.6), until the cement touches the mould (until then do not remove the flame because it is necessary to keep the melt at optimum temperature), then press the cement down slowly and steadily onto the mould, until it has reached the bottom or two-thirds the depth of the mould cavity (fig.7). Remove the cement after 15 seconds (fig.8).

II) Important points to note:

1. do not damage the mould with pressure, shocks or moisture
2. the mould cement should be compact without any hollow spaces; also it should not be too soft or hard
3. do not use strong flames to heat quickly at the start of the process
4. during die-casting do not stamp or press too quickly
5. the die-cast piece must be allowed to dwell for at least 15 seconds inside the mould after die-casting is complete
6. die-casting action must be steady, accurate without any shaking or shrinkage
7. the amount of gold used must not be too big, otherwise the metal will splash during die-casting

III) Quality problems commonly occurred in die-cast pieces

1. Flashes: which are caused by: (1) the mould being compressed with force or under shocks; (2) moisture; (3) heating too quickly
2. Die-cast piece broken into fragments: causes: (1) dwelling time of the die-cast piece too short; (2) shaking or shrinkage; (3) stamping or pressing too quickly; (4) presence of moisture
3. Holes at the bottom of the piece or the cement cannot reach the bottom: causes: (1) temperature too low; (2) presence of moisture
4. Pulses occurred when heating the gold melt; caused by the mould being stored in a damp place, in this case the mould must be pre-heated before the process.

IV) Preparation of the mould cement

Cement can be made by mixing uniformly edible oil with water, using a larger amount of oil than water; soil can also be used with oil and water being added. It would even be better if cement commonly used for making tooth moulds is used.



SD14



SD15



SD11



SD12



SD951



SD981



SD220



SD996



SD89



SD87

SD801



SD998



SD995



SD997



SD2002



SD962B



SD2001



SD991



SD963

荷兰专辑

Special Edition for Holland



中国驰名商标
Well-Known Trademark of China

中国福建金得利集团有限公司
CHINA FUJIAN JINDELI HOLDINGS LIMITED

总部地址：中国福建省福州市金山工业区橘园洲13号楼
Add: Block 13, Juyuanzhou Jinshan Industrial Area, Fuzhou, Fujian, China
电话/Tel: 0086 (0591) 2868 0466, 2866 8217
传真/Fax: 0086 (0591) 2866 8363 邮编/P.C: 350002
网址/http://www.chinajindeli.com
电子邮件/E-mail:moulding@jdl.com

印刷品登记证
(闽福州) 印广登字第 98120 号